



JETNET

JetNet 4508 / 4508f

Industrial 8-port Fast Ethernet Managed Switch

Quick Installation Guide

V1.2

www.korenix.com

Introduction

The JetNet 4508/4508f series is an 8-port industrial managed Fast Ethernet Switch designed with advanced Layer 2 management features and high system reliability, including MSR and MSTP network redundancy technologies, for ensuring real-time and high quality connectivity in various networking applications. The Ethernet switch includes 8 10/100Mbps Fast Ethernet RJ-45 ports (JetNet 4508) or 6 10/100Mbps RJ-45 plus 2 Fast Ethernet Fiber ports (JetNet 4508f) and 32Gbps switch fabric to provide real time non-blocking transmission performance for satisfying the needs of high bandwidth data transmission requiring applications while ensuring traffic switching without data loss. Besides, the new system design includes a hardware based watchdog timer for keeping the operating system live. It also provides power redundancy with wide range DC10V~60V inputs for ensuring the power continuity in the system. Combining the outstanding L2 management features along with the LLDP and the JetView Pro Intelligent NMS into the ruggedized design with IP31 enclosure and -25~70°C (JetNet 4508), -10~70°C (JetNet 4508f) and -40~75°C (JetNet 4508-w / 4508f-w) wide operating temperature, the switches provide highly reliable and secure data transmission under severe industrial environments.

Package Checklist

Unpack the box, you will find

- ▶ JetNet 4508 or JetNet 4508f with
DIN Rail kit x1
- ▶ Quick Installation Guide
- ▶ Console Cable (RJ-45 /DB9)



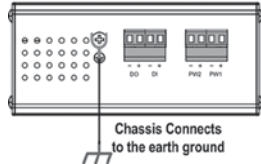
Mounting the Unit

Din-Rail mount: Mount the din-rail clip on the rear of JetNet 4508 / 4508f on the DIN rail. For information about the DIN Rail installation, please refer to user's manual.



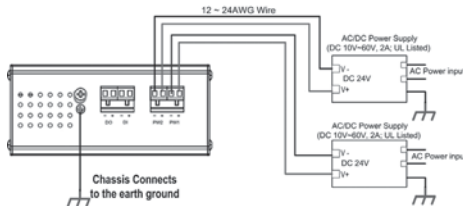
Grounding JetNet 4508 / 4508f

There is one grounding screw on the bottom side of JetNet 4508/4508f. Connect the frame grounding of JetNet 4508/4508f to the grounding surface to ensure safety and prevent noise to interfere communication.



Wiring the Power Inputs

1. Insert the positive and negative wires into the V+ and V- contact on the terminal block connector.



2. Tighten the wire-clamp screws to prevent the power wires from being loosened.

Notes: The recommended working voltage is DC 24V (Input range: DC10~ 60 V), maximum power consumption is 10 Watts.

Wiring the Relay Output (DO)

The relay output contacts are in the bottom side as shown on Figure-3. The relay output (DO) is controlled by the pre-defined operating rules. To activate relay output function, please refer to the User's Manual for the Relay Output information.

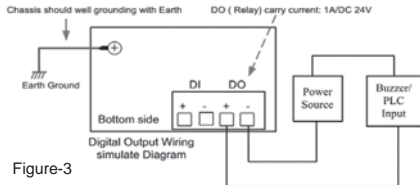


Figure-3

Note: The relay contact only supports 1A current, DC 24V. It is not recommended to apply voltage and current higher than the specifications.

Wiring the Digital Input (DI)

The Digital Input (D.I.) contacts are in the bottom side of the device as shown in Figure-4. It accepts one external DC type signal input and can be configured to send alert message through Ethernet when the signal is changed.

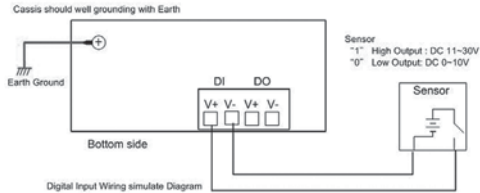



Figure-4

Note: the DI accepts DC type signal and supports isolated input circuit with Digital High Level input DC 11V~30V and Digital Low Level input DC 0V~10V. Do not apply voltage higher than the specification; it may cause internal circuit damage or a wrong action of DI.

Connecting to Network

- 1. Connecting the Ethernet Port:** Connect the Ethernet port of JetNet 4508 series with the other Ethernet device by Cat-5/Cat-6 UTP or STP cable, and then the LNK/ACT LED will turn on and start flashing to indicate the communication is occurred between 2 devices.
- 2. Connecting the Fiber Port:** Cross-connect the transmit channel at each end to the receive channel at the opposite end as illustrated in the Figure-5.

ATTENTION This is a Class 1 Laser/LED product. Don't look into the Laser/LED Beam.



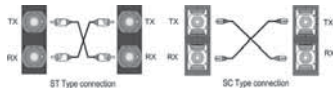


Figure-5

Device Management

JetNet 4508 series Industrial Managed Switch provides both in-band and out-band configuration methods. You can configure the switch via the RS-232 console with the attached console cable. Or you can remotely manage the switch via network. You can choose Telnet/SSH, Web/HTTPS management.

1. Preparation for console management: Attach the RS-232 DB9 connector to your PC's COM port. Connect the RJ-45 connector to the console port of the JetNet 4508 Switch.

Go to Start -> Program -> Accessories -> Communication -> Hyper Terminal

Give a name to the new console connection.

Choose the COM name and select the correct serial settings. The serial port settings of JetNet 4508 are as below: 9600bps, No parity check, 8 Data bits, 1 stop bit

After connected, you will see the Switch login request. Type the username and password and then you can login. The default username is "admin", password is "admin".

Follow the manual to configure the software features.

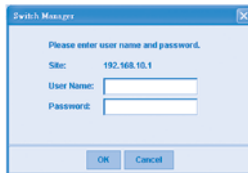
2. Preparation for Web management: Before you attempt to use the embedded web interface to manage switch operation, verify that JetNet 4508 is properly installed on your network and that every PC on this network can access the switch via the web browser.

Launch the web browser (Internet Explorer or Mozilla Firefox) on the PC.

Type `http://4508_IP_Address` (The default IP address is 192.168.10.1), then press Enter.

The login screen will appear next.

Type in the user name and password and click "OK" button. The welcome page of the Web-Based management interface will appear then. The default user name and password is admin/admin.



At the left column of the web management interface are the software features, where ring column will list the available settings.

For more operating instructions, please refer to the User's manual of JetNet 4508/JetNet 4508f series included in the packing or downloadable from the Korenix Website – www.korenix.com.



Korenix Customer Service

KoreCARE is Korenix Technology's global service center, where our professional staffs are ready to answer your questions at any time.

Korenix global service center's e-mail is KoreCARE@korenix.com

korenix

Tel: +886-2-89111000

Fax: +886-2-29123328

Business service: sales@korenix.com

Customer service: koreCARE@korenix.com

CPQ000N4508002

Patent No. (Taiwan):
Granted Invention: I 313547
Granted Invention: I 321415
Granted Invention: I 344766
Granted Invention: I 346480
Granted Invention: I 356816
Granted Invention: I 364884
Granted Invention: I 376118
Granted Invention: I 383317
Granted Invention: I 398066
Granted Invention: I 398125
Utility Model: M 339840
Utility Model: M 339841

台灣專利
發明第 I 313547 號
發明第 I 321415 號
發明第 I 344766 號
發明第 I 346480 號
發明第 I 356816 號
發明第 I 364884 號
發明第 I 376118 號
發明第 I 383317 號
發明第 I 398066 號
發明第 I 398125 號
新型第 M 339840 號
新型第 M 339841 號