

Industrial VPN Router Computer with GbE/SFP, Serial

JetBox 5630Gf-w



The stylish compact JetBox 5630Gf-w is an industrial layer 3 VPN router with Linux computing supported. It is a gateway to connect different network groups, such as a complex networking architecture with Ethernet and serial control and the front-end site with peripherals management. With Gigabit Ethernet, fiber connection, and network redundancy supported, JetBox 5630Gf-w can be applied in crossroads or highway for flow control and traffic remote monitoring. JetBox 5630Gf-w is compact, reliable and robust industrial computer for various industrial vertical markets, such as transportation, surveillance and environmental monitoring.



Gigabit



Routing



VPN



Linux



Modbus

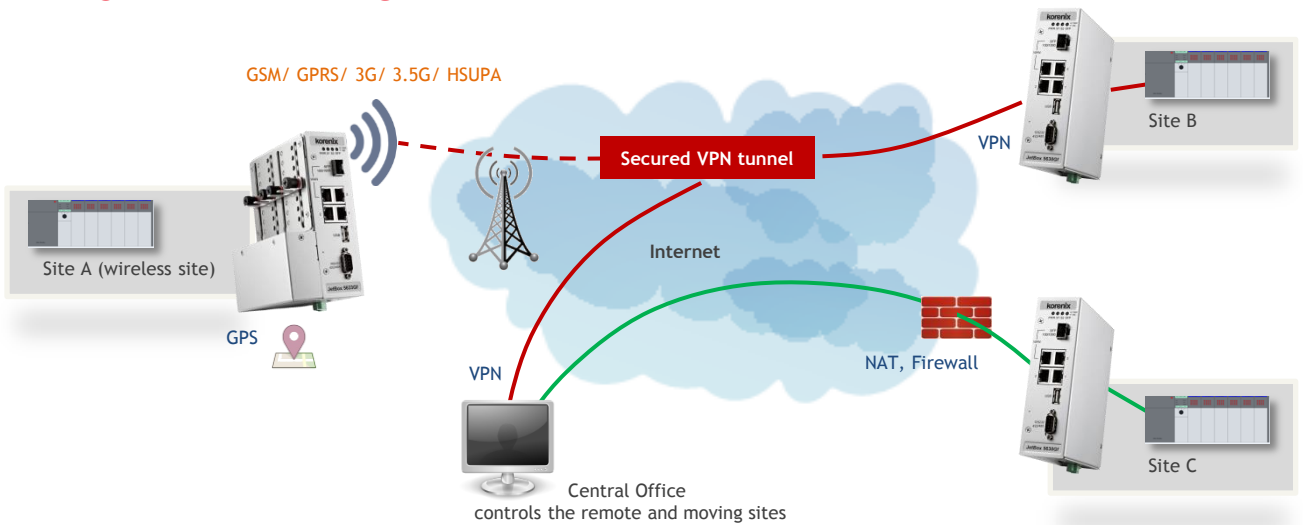


Heavy Industrial

Feature

- ▶ TI AM3352 1GHz with HW engine to enhance VPN performance: OpenVPN, IPsec VPN, NAT
- ▶ Complete Layer 3 routing support: Static, OSPF, RIP
- ▶ Full managed features with QoS, VLAN
- ▶ 3 port Gigabit LAN + 1 port Gigabit RJ/SFP combo WAN
- ▶ 1 port RS232/422/485 for serial device control
- ▶ SD/ USB for extra storage or wireless extension
- ▶ Linux ready platform with Web UI for easy configuration
- ▶ Programmable with Linux SDK for customization
- ▶ Modbus TCP/RTU gateway for Modbus devices control
- ▶ Modbus2SNMP gateway for convenient IT management
- ▶ Support Korenix View, Korenix NMS for intelligent network management
- ▶ Support Korenix MSR ring redundant technology which also provide high quality data transmission
- ▶ Network redundancy for ensuring network availability
- ▶ Rate limit function for flexible flow control
- ▶ DC 9-36V power input with reverse protection
- ▶ Fan-less, ruggedized industrial design for anti-vibration/shock, and -40-75°C wide temperature

Secure Remote Control



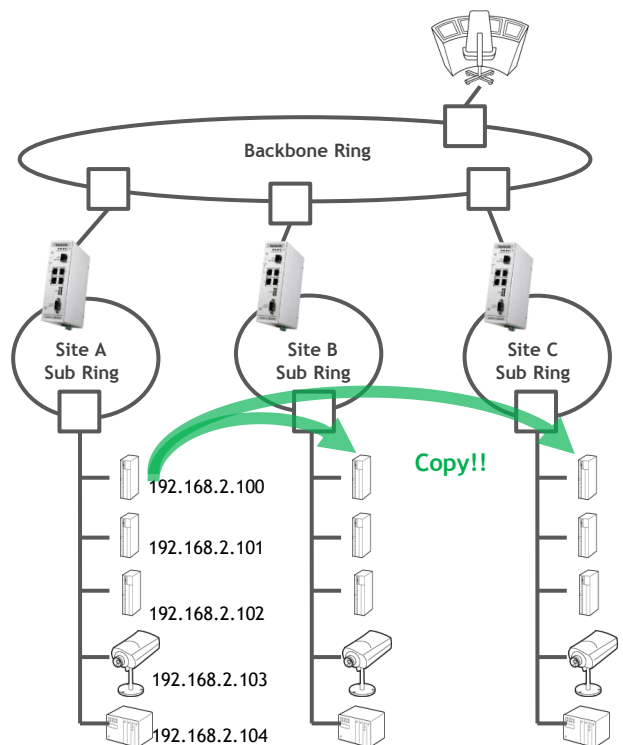
Computer networks are now open systems which consist of intranets, extranets, and Internet sites. Therefore, the key requirement of remote access of on-site monitoring station must be a secure encrypted data exchange tunnel. JetBox 5630Gf-w series supports many kinds of VPN protocols such as IPSec, OpenVPN and L2TP for providing multi choices for different applications.

L2TPv3 (Layer 2 Tunneling Protocol Version 3) is an IETF standard related to L2TP that can be used as an alternative protocol to Multiprotocol Label Switching (MPLS) for encapsulation of multiprotocol Layer 2 communications traffic over IP networks.

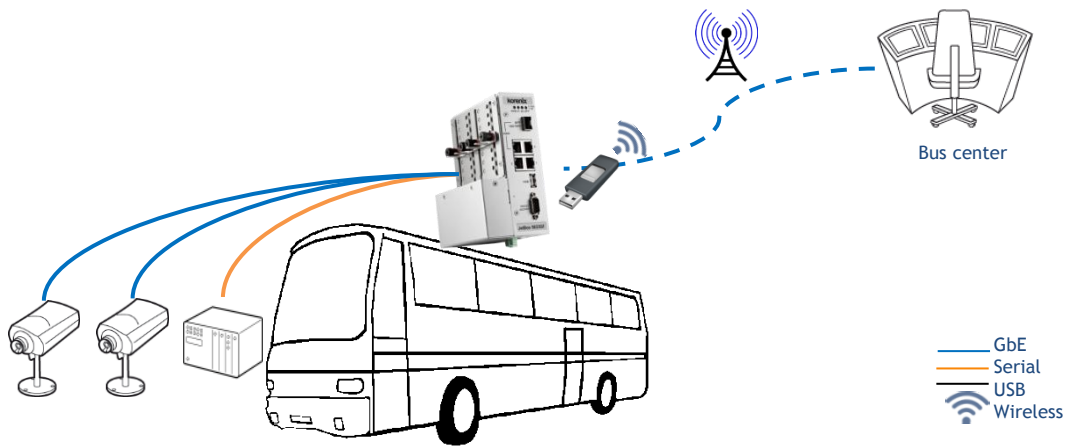
Simplify Your Network Architecture

By enabling NAT (Network Address Translation) and Firewall on the WAN port, JetBox 5630 series opens the field side services to Internet securely and can simplify network architecture, which best fits for applications such as tolling stations, environmental monitoring, traffic surveillance, fire surveillance, forest surveillance and so on.

For example, with NAT you don't have to assign different IP to each device in every single site. Instead, you can copy configuration from one site to another site, so that it will be easier for maintenance.



Best Solution for Vertical Market

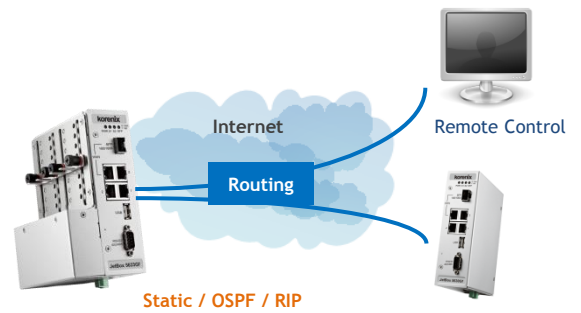


In transportation applications, devices only can get 9V power supplied from battery before the engine boosts with 12V power input, so JetBox 5630Gf-w is designed with wide power input range from 9V to 36V which is suitable for this kind of environment.

In addition, it supports wide operating temperature (-40-75°C) to withstand extreme hot or cold hazard environment. JetBox 5630Gf-w series also conform to IEC61000-6-2/-6-4 heavy industrial level EMC and are anti-shock, bump and vibration for harsh industrial environment.

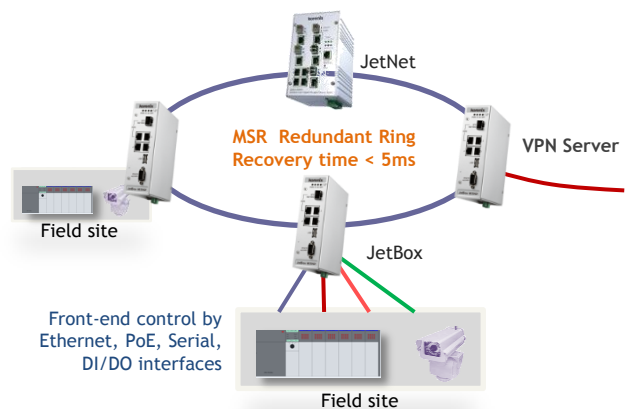
High Speed Routing

JetBox 5630Gf-w supports layer 3 routing, such as static, OSPF and RIP protocol, to allow packets transferring between different subnets; therefore, it can be used in applications which need to exchange data cross-regionally or monitor devices from remote site. Also, IPv6 is available in JetBox 5630Gf-w to fulfill customers' requirements in on-coming network development.



Gigabit Redundant Ring

MSR redundant ring ensures link reliability when connecting field network. A link failure can recover rapidly within 5ms which minimizes data loss.



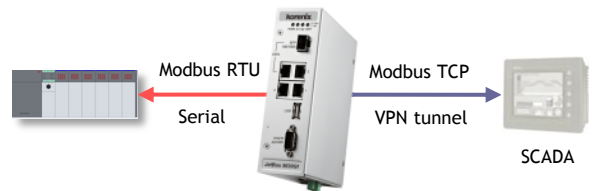
Mobility (Wifi, 3G, Bluetooth)

JetBox 5630Gf-w supports USB dongle for wireless network expansion, such as 3G, 4G for mobile communication and Wifi or Bluetooth for short distance wireless transmission. JetBox 5633f-w is designed with special mechanical holder for dongles and preventing from being loosen in vibration.



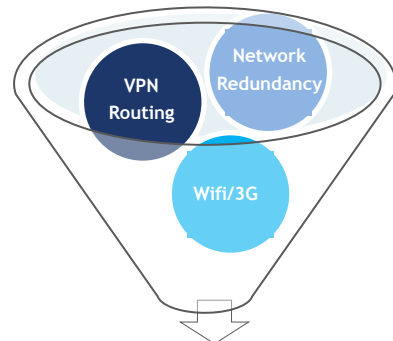
Modbus Gateway for Front-end Control

Modbus protocol is widely used in industrial automation applications; therefore, Modbus Gateway is especially needed in these kind of applications. Modbus Gateway can enable serial Modbus RTU (or Modbus ASCII) devices to communicate with Modbus TCP devices.



Easy-to-use WebUI

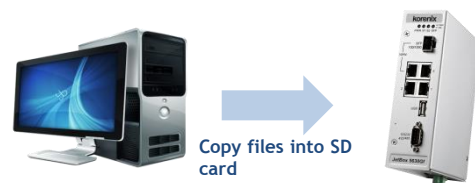
For easing user management, Korenix provides a user friendly interface based on LuCi, which is a compact-size, multi-programming-language compatible and high performance web interface. Korenix featured functions such as routing, switching, VPN and network redundancy settings which enable users to set up with user interface or directly with Linux command.



Korenix JetBox User Interface

Programmable Linux Computer

JetBox 5630Gf-w adopts Linux kernel 3.2 with advanced efficiency to provide a more functional, stable and reliable system for specific front-end control applications. We also provide SDK and sample code for customer to develop your own applications.



Linux workstation

- Install Korenix SDK in Linux computer
- Compile your program with the SDK

Linux auto-run for customization

- JetBox would execute settings in SD card automatically
- Optional security function for protection

Hardware Specification

System	
Processor	TI AM3352 1GHz ARM Cortex-A8 (Fan-less)
System memory	512MB DDR2 SDRAM
System flash	256MB, up to 100MB free space for customized program storage
Ethernet Ports	4 x 10/100/1000 Base-T(X) RJ-45
Fiber Port	1 x 100/1000 Mbps SFP fiber/RJ-45 combo
Memory storage	1 x SD card slot
Serial port	1 x RS232/422/485 (DB9 connector), default RS232, RS485 support 4-wire only
USB	1 x USB 2.0 (Host) Supporting devices: USB flash, wireless dongle
Console port	3-pin header (RS232 interface)
Diagnostic LEDs	Power Status, System: On (Green on) 2 x Status for Customization (Green or Amber) Fiber Status: 1000Mbps (Green on) / 100Mbps (Amber on) Ethernet Port: Link (Green on) / Activity (Green blinking) Ethernet Speed: 1000Mbps (Amber on) / 10 or 100Mbps (Amber off)
Power on/off	1 x Power on/off switch
Reset	1 x Reset button, reboot: 3 seconds/reset default: 7 seconds
HW Watchdog timer	Embedded hardware watchdog timer to auto reset system when system failure
Power Supply	DC 9-36V power input with polarity auto reverse protection
Power Consumption	10W
OS support	Embedded Linux 3.2
Mechanical	
Case	IP30 grade sheet metal chassis
Color	Silver
Mounting	EN50022 DIN-rail mount
Dimension (H x W x D)	160 x 47 x 118 mm (without DIN-rail clip)
Net weight	0.9kg
Environment	
Operating Temperature	-40 - 75°C (-40 - 167°F)
Operating Humidity	0 - 95%
Storage Temp	-40 - 80°C (-40 - 176°F)
Storage Humidity	0 - 95%
Approvals	
EMI	CISPR 16-1-2/ 16-2-1/ 16-2-3 / 22, FCC Part 15 Subpart B Class A, ANSI C63.4 Heavy Industrial IEC/EN61000-6-4
EMS	Heavy Industrial IEC/EN 61000-6-2, IEC 61000-4-2, IEC 61000-4-3, IEC 61000-4-4, IEC 61000-4-5, IEC 61000-4-6, IEC 61000-4-8, IEC 61000-4-9
Shock	IEC60068-2-27
Bump	IEC60068-2-29
Vibration	IEC60068-2-64
Free Fall	IEC60068-2-32
Railway EMC	EN 50121-1/-4 (Compliance)
Warranty	5 years

Feature Specification

Serial Interface	
Serial service modes	Serial to Ethernet. Connect a network to a serial port
WAN Interface	
Ethernet	10/100/1000 Base-TX RJ-45 connector, 100/1000 fiber SFP socket combo x1 , auto MDI/MDI-X
LAN Interface	
Ethernet	10/100/1000 Base-TX RJ-45 connector x3, auto MDI/MDI-X
VLAN	Support IEEE802.1Q VLAN and port-based VLAN
Quality of Service	Four priority queues per port, 802.1p COS and IP Layer TOS/DiffServ
Ethernet Performance	
Switch Technology	Store and Forward technology
Transfer Rate	14,880 pps for 10M Ethernet, 148,800 pps for 100M Fast Ethernet, 1,488,100 pps for Gigabit Ethernet
Transfer Packet Size	64 bytes to 1522 bytes (with IEEE tagged frames)
Jumbo Frame	Default enabled, Up to 10 K bytes
MAC address	8K MAC address table
Packet Buffer Memory	1Mbits
Packet filtering	Broadcast packet filtering
IP Routing Service	
Static routing	Yes
Dynamic routing	RIP, RIP-II, OSPF, BGP
PPP	Yes
PPPoE	Yes
IP Firewall/ Perimeter Security	
IP	IP address and port filtering
NAT/ DMZ	Yes
VPN	IPsec, OpenVPN, GRE, PPTP, L2TP V3
Management & Security	
Security	HTTPS, SSH, SFTP
WebUI	LuCI-based
Linux shell	Linux shell access via TELNET connection or console port
SNMP	v1, v2c, v3 MIB-II and traps
NTP	Yes, for time management
Technology	
Standard	IEEE802.3 10Base-T Ethernet IEEE802.3u 100Base-Tx Fast Ethernet IEEE 802.3ab 1000Base-T IEEE 802.3z Gigabit Ethernet Fiber IEEE802.3x Flow Control and Back-pressure IEEE802.1p Class of service IEEE802.1Q VLAN

Linux Specification

Embedded Linux	
Bootloader	U-Boot
Linux Kernel	3.2
Shell	GNU ash
File system	jffs2, NFS, Ext2, Ext3, VFAT, FAT, Squashfs, UBIFS
Device drivers	USB, Watchdog timer, UART, Ethernet, SD/mSD card, CF card, HW IPsec VPN, HW Open VPN, Mobile dongle
Protocols	ARP, PPP, CHAP, IPv4, IPv6, PAP, ICMP, TCP, UDP, NFS, SNMP v1/v2c/v3, NTP, SSH1.0/2.0, SSL, OpenVPN, Ipsec, PPP, PPPoE, PPTP, FTP, HTTP, SMTP, DNS, L2TPv3, L2TP over IPsec, OSPF, RIP v1.0/2.0, BGP*, 802.11*, HSDPA*, GPRS* telnet, dhcp, VLAN
SW package	Busybox (telnetd, inetd, udhcp, syslogd), e2fsprogs, firmware, i2c-tools, microcom, mtd, netcat, pciutils, ser2net, setserial, usbmount, usbutils, version, bridge-utils, ethtool, iptables, net-snmp, ntp, openssh, openssl, openvpn, openswan, pppd, rp-pppoe, Quagga, wireless-tools, wvdial, Samba
WebUI includes	WebUI by Korenix: System Settings, Network Settings, Switch, Configuration/Firmware Upgrade, OSPF, RIP, VLAN, Wireless WiFi/3G Settings, OpenVPN/IPsec/L2TP, Firewall, Multi-language Select*, Network Redundancy
Korenix Linux auto-run function	Yes
Customized configuration	Yes
Process monitoring	Yes
SDK	
Linux tool chain	Gcc(C/C++ PC cross compiler), glibc
Linux sample code	Yes
Note	Software supports differ from HW functions of each model *Specifications may change without prior notice

Ordering Information

JetBox 5630Gf-w Industrial VPN Router Computer with GbE/SFP, Serial

Includes:

- ▶ JetBox 5630Gf-w x1
- ▶ Console cable x1
- ▶ Attached 2-pin power terminal block
- ▶ Quick installation guide
- ▶ Documentation and software CD ROM

