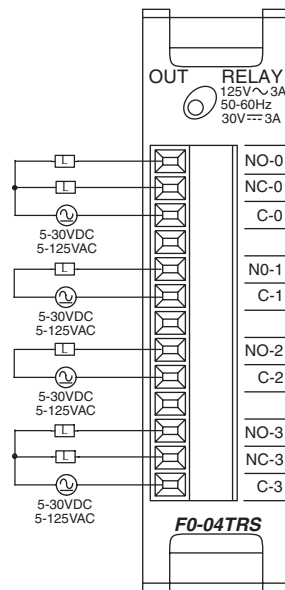


DL05/06 I/O Option Modules

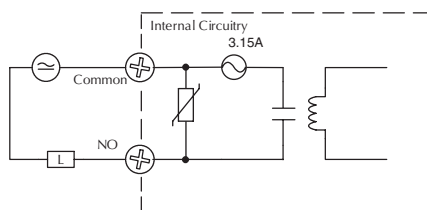
F0-04TRS <--->

4-point relay output module

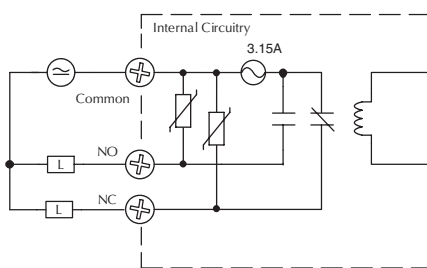
F0-04TRS Output Specifications	
Number of Outputs	4
Output Voltage Range	5-30VDC/5-125VAC
Output Type	2 - form C (SPDT) 2 - form A (SPST normally open)
Output Points Consumed	8
Peak Voltage	60VDC/220VAC
AC Frequency	47-63Hz
Maximum Current (resist.)	3A/point with no derating
Minimum Load Current	10mA @ 5V
Maximum Leakage Current	N/A
ON Voltage Drop	N/A
Maximum Inrush Current	5A
Off to On Response	≤ 5mS (typical)
On to Off Response	≤ 5mS (typical)
Status Indicators	None
Commons	4 isolated
Fuses	4, IEC 3.15A, replaceable, D2-FUSE-1
Base Power Required (5V)	250mA Max. (all points ON)



Typical Circuit

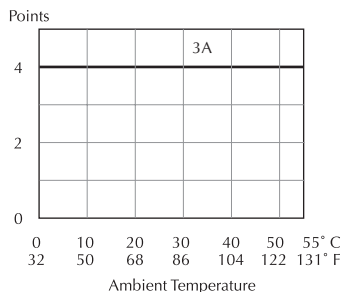


Typical Circuit



F0-04TRS Typical Relay Life at 30 Operations per Minute			
Load Type	Rated Voltage	Rated Current	Number of Operations
Resistive	120VAC	3A	120,000
Resistive	120VAC	1A	550,000
Resistive	24VDC	1A	>2M
Inductive: SC-E5 Motor Starter	24VDC	0.2A	>2M (see Note)
Inductive: SC-E5 Motor Starter	120VAC	0.1A operating 1.7A fault	>2M (see Note)

Note: Transient suppression must be installed with inductive loads.



NOTE: The DL05 CPU's discrete feature for this module requires **DirectSOFT** Version 3.0c (or later) and firmware version 4.70 (or later). The DL06 requires **DirectSOFT** version V4.0, build 16 (or later) and firmware version 1.50 (or later). See our website for more information: www.automationdirect.com.