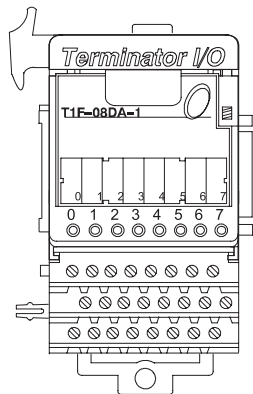


Analog Current Output Module

T1F-08DA-1 <--->

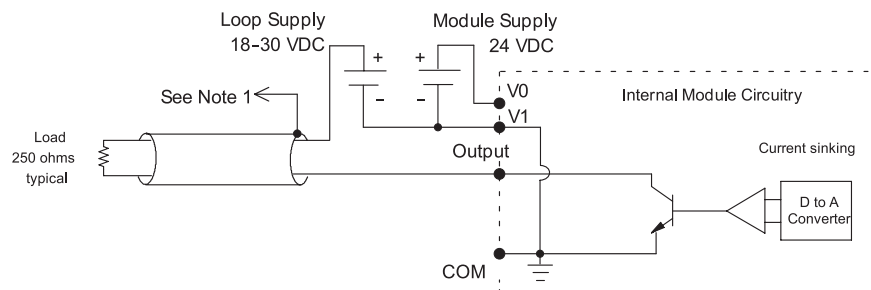
8-channel analog current output module

The 8-channel current output module uses a T1K-08B or T1K-08B-1 base, which is purchased separately.



T1F-08DA-1 Analog Output Specification	
Channels Per Module	8
Output Ranges	0-20 mA, 4-20 mA
Output Type	Single-ended, 1 common
Resolution	12 bit (1 in 4096)
Max. Loop Supply	30 VDC
Peak Output Voltage	30 VDC
Load Impedance	0Ω min.
Max. Load (ohm) / Power Supply	620/18 V, 910/24 V, 1200/30 V
Min. Load (ohm) / Power Supply	0/24 V, 350/30 V @ 40°C 250/24V, 600/30 V @ 60°C
Linearity Error (end to end)	± 2 counts max. ± 0.05% of full scale max.
Conversion Settling Time	400 μs max. full scale change
Full Scale Calibration Error	± 12 counts max.
Offset Calibration Error	0-20 mA: ± 6 counts max. 4-20 mA: ± 6 counts max.
Accuracy vs. Temperature	± 50 ppm/°C full scale calibration change
Max. Full Scale Inaccuracy (% of full scale); all errors included	0.2% @ 25°C 0.4% @ 60°C
Master Update Rate	8 channels per scan max.
Output Points Required	256 discrete pts. or 8 Dwords (32-bit words) (network interface dependent)
Base Power Required	75 mA @ 5 VDC
External Module Power Required	21.6-26.4 VDC, 150 mA, class 2
Weight	145 g

Equivalent Output Circuit



NOTES:

1. Shields should be connected to the 0V terminal of the module or the 0V of the power supply.
2. Unused current outputs should remain open (no connections) for minimum power consumption.

PLC Overview

DL05/06 PLC

DL105 PLC

DL205 PLC

DL305 PLC

DL405 PLC

Field I/O

Software

C-more HMIs

Other HMI

AC Drives

Motors

Steppers/Servos

Motor Controls

Proximity Sensors

Photo Sensors

Limit Switches

Encoders

Pushbuttons/Lights

Process

Relays/Timers

Comm.

TB's & Wiring

Power

Enclosures

Appendix

Part Index