

JetWave 5.8G 23dBi Directional Panel Antenna

JWDA-5.8G-23dBi-NF with Cable

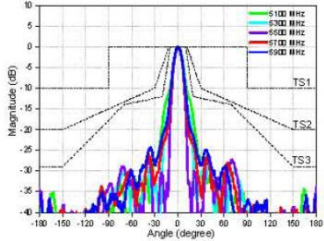


- ▶ Antenna Type : Directional Panel Antenna
- ▶ Frequency : 5.8 GHz
- ▶ Gain : 23 dBi
- ▶ Connector : N-Type Female
- ▶ Polarization : Linear
- ▶ Dimension : 320 x 320 x 43 mm
- ▶ Temperature : -40~80°C
- ▶ Cable : N-Male to N-Male Cable
- ▶ Apply to : JetWave 2800

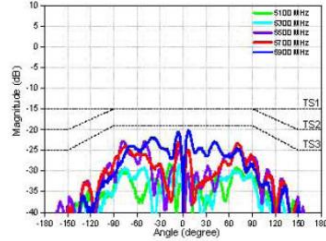
Specification

Horizontal

H-plane Co-polarization Pattern

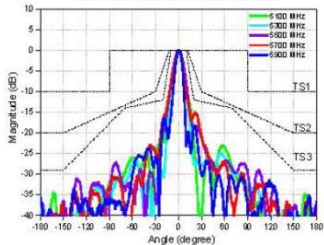


H-plane Cross-polarization Pattern

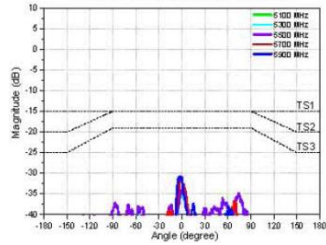


Vertical

V-plane Co-polarization Pattern



V-plane Cross-polarization Pattern



Features

Antenna Type	Directional Panel Antenna
Frequency	5.1~5.8GHz
Gain	21.5~23 dBi
Polarization	Linear
Power handling	5W Max
Impedance	50 Ohm
HPBW/horizontal	9~11.5°
HPBW/vertical	8~12°
V.S.W.R(Max)	1 : 2.0

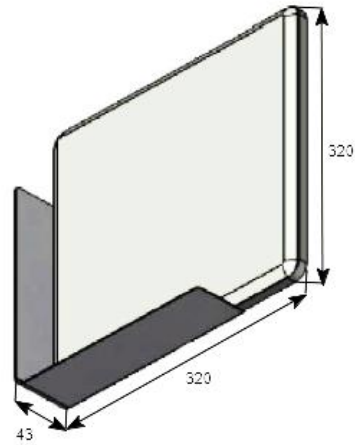
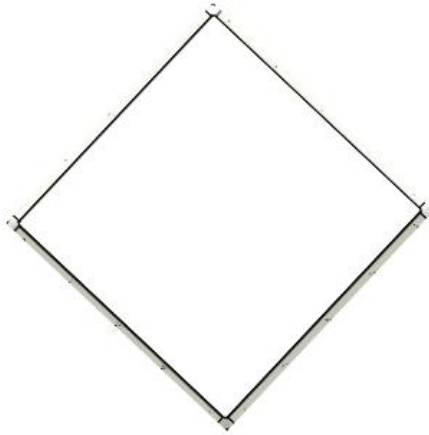
Mechanical & Environmental

Connector	N-Type Female
Radome color	Gray-white
Radome Material	PC, UV resistant
Dimension	320 x 320 x 43 mm
Weight	1200g
Temperature	-40~80°C

Apply Model

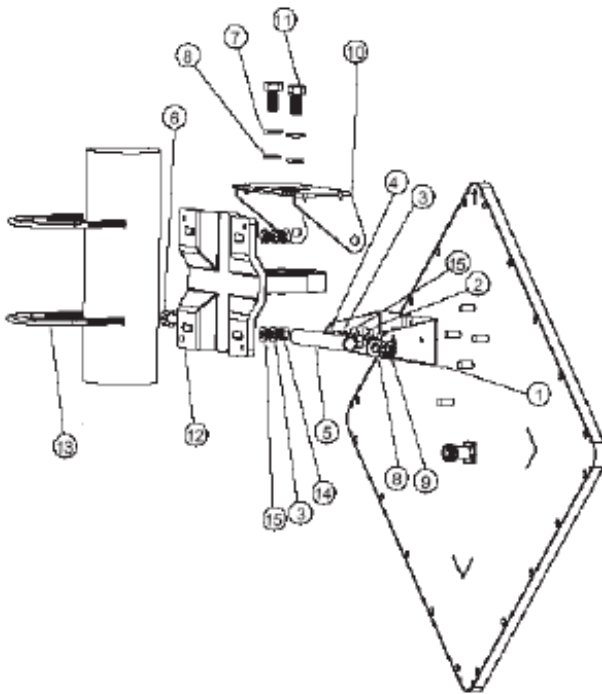
JetWave 2800

Dimension (Unit = mm)

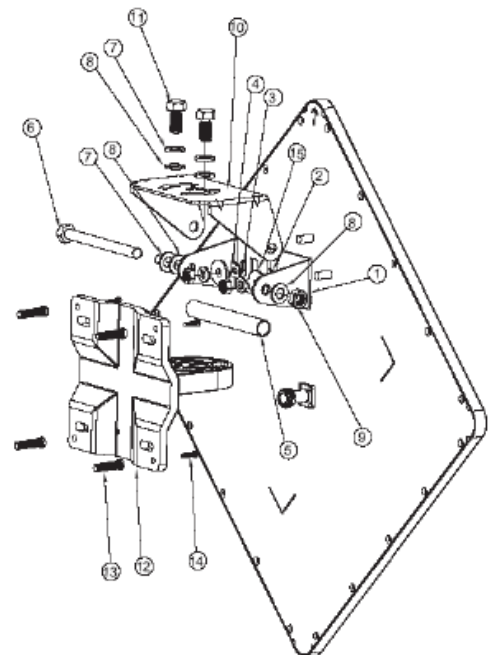


Mounting Configuration

Pole mount



Wall mount



1.	M-Type Bracket	×1
2.	Space Keeper	×2
3.	M6 Spring Washer	×6
4.	M6-1.0 NUT(10*5)	×2
5.	STEEL TUBE	×1
6.	XHM8-1.25*120	×1
7.	M8 Spring Washer	×3
8.	M8 Washer	×4

9.	M8 Nut	×1
10.	Rotating bracket	×1
11.	XHM8-1.25*20	×2
12.	Mounting Main frame	×1
13.	Wall TIGER	×4
14.	TH 5/32-16*	×4
15.	M6 Washer	×1